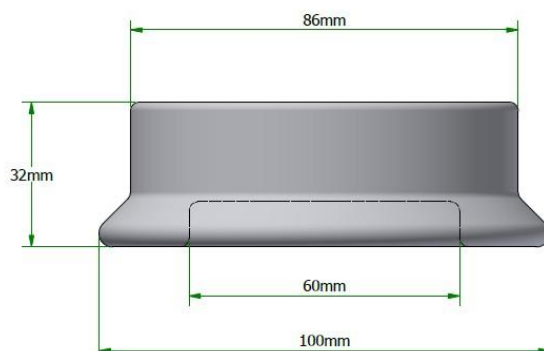
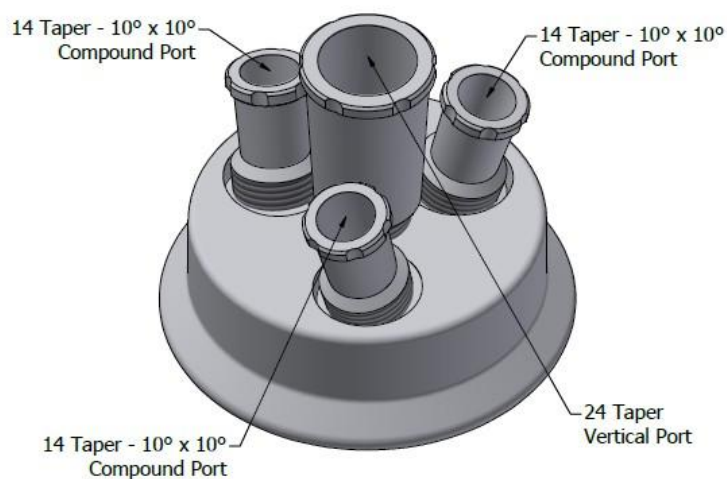


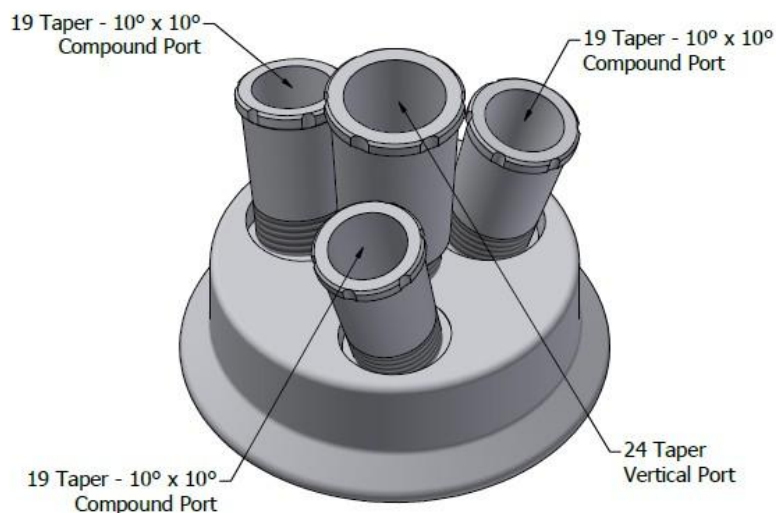
Pre-assembled Reactor Lids to fit Duran® type flanges. The taper joints are removable and interchangeable. Reactor lids can be customised to your exact requirements. Please contact us at [enquiries@cowie.com](mailto:enquiries@cowie.com) for further information.

**60mm Pre-Assembled Reactor Lids:**

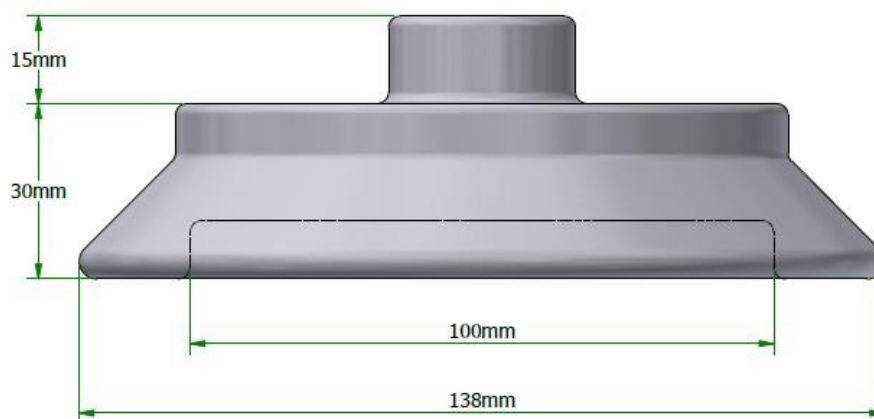
**PC715.060.001**



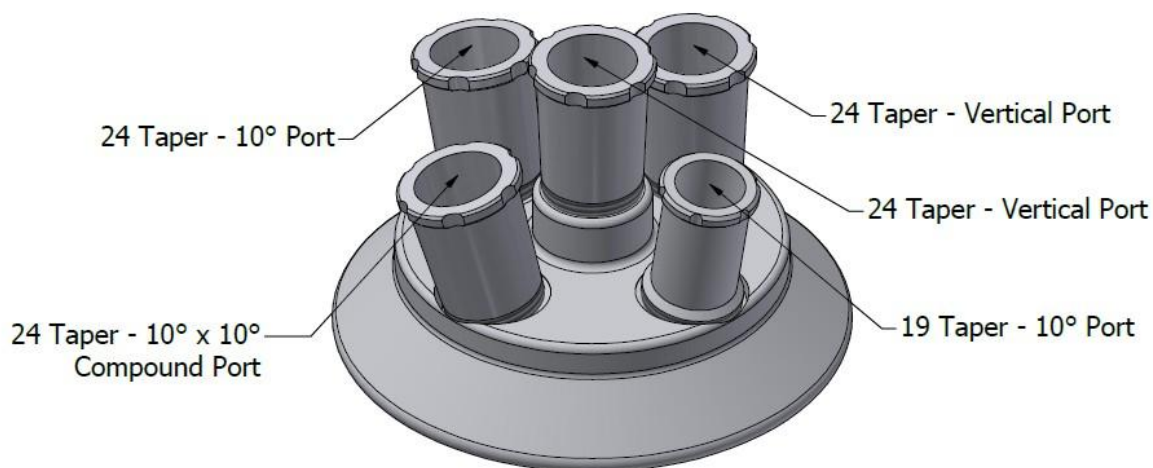
**PC715.060.002**



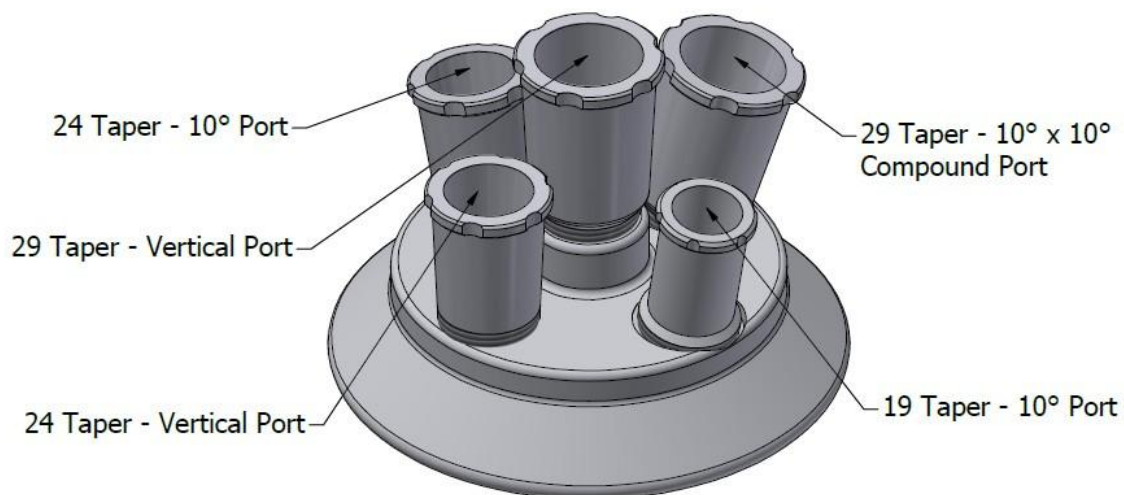
**100mm Pre-Assembled Reactor Lids:**



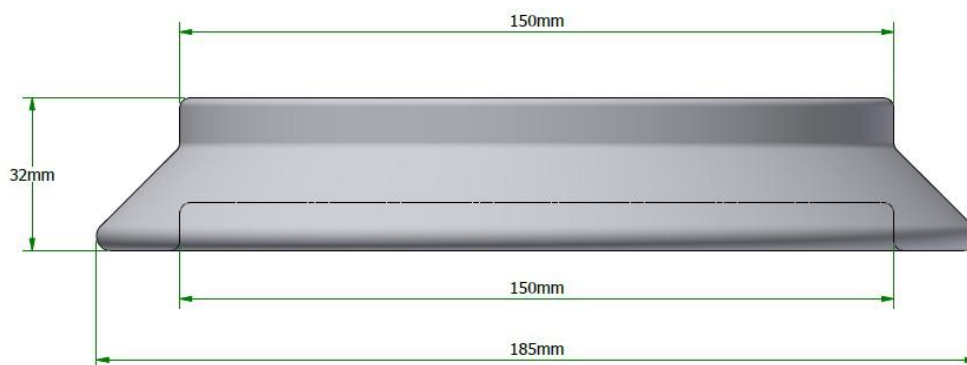
**PC715.100.001**



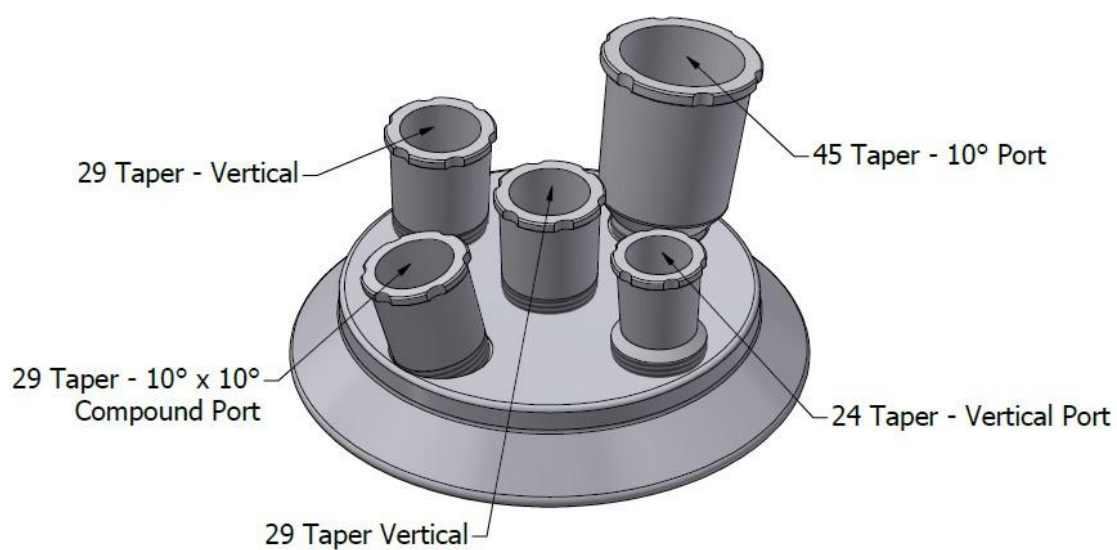
**PC715.100.002**



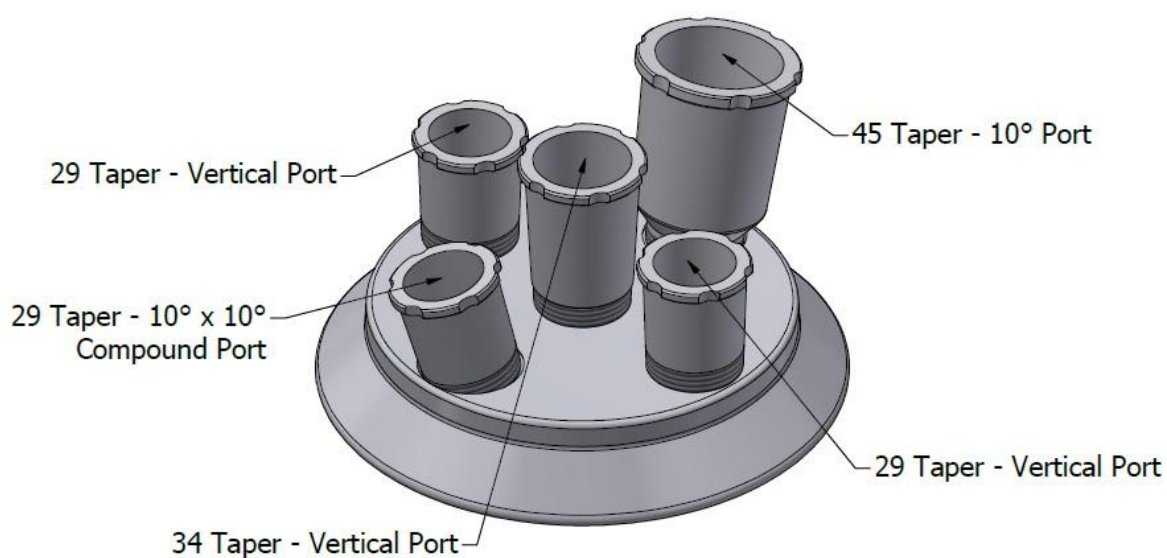
**150mm Pre-Assembled Reactor Lids:**

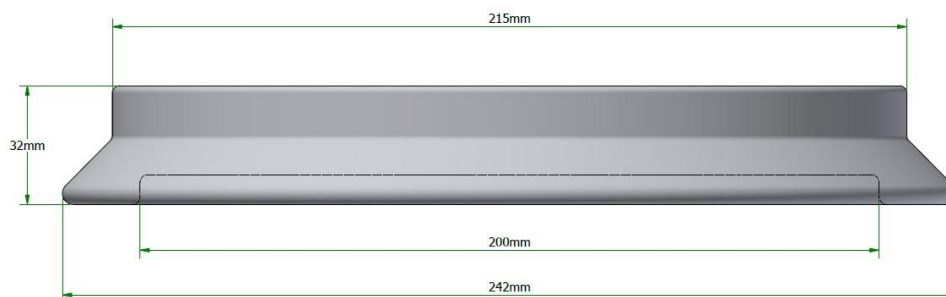
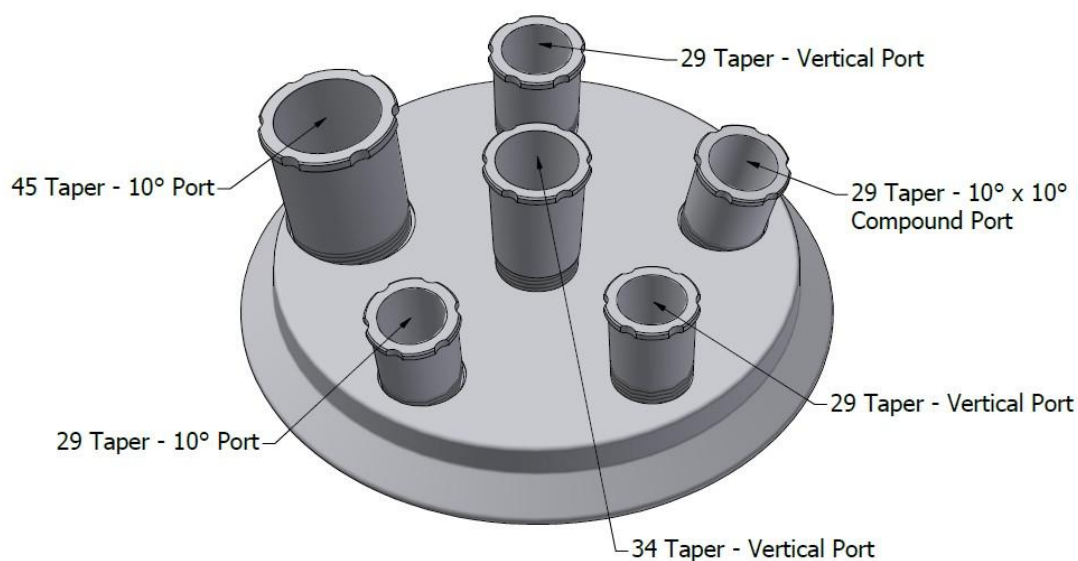


**PC715.150.001**



**PC715.150.002**



**200mm Pre-Assembled Reactor Lids:****PC715.200.001****PC715.200.002**