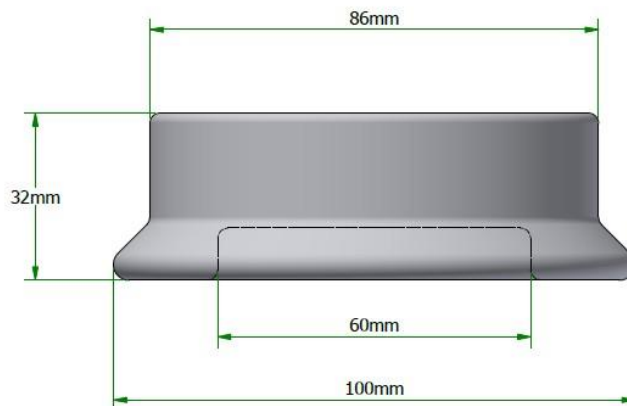
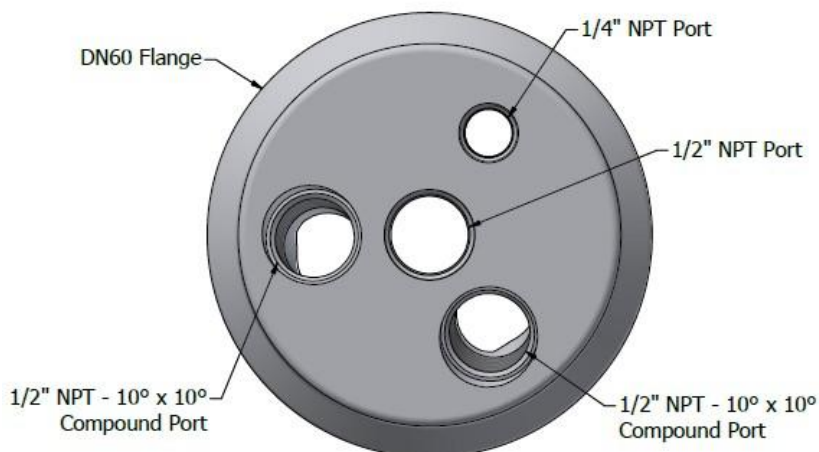


Self Assembly Reactor Lids, supplied without fittings to fit Duran®/Schott® type flanges.
Reactor lids can be customised to your exact requirements. Please contact us at enquiries@cowie.com for further information.

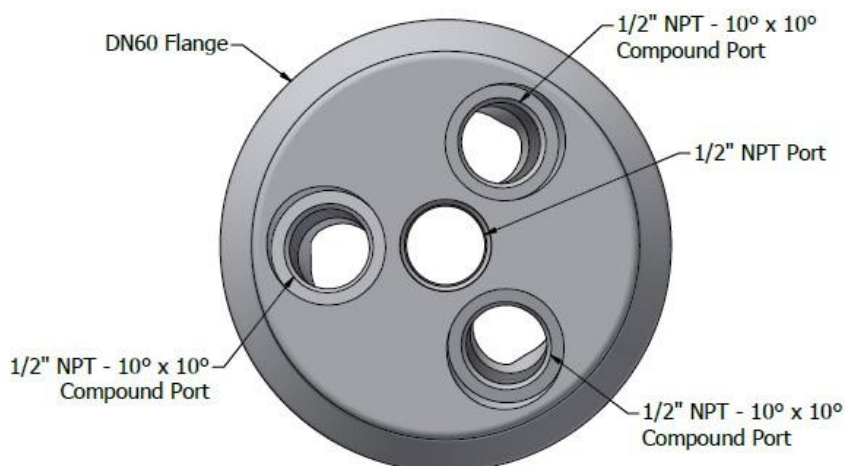
60mm Self Assembly Reactor Lids:



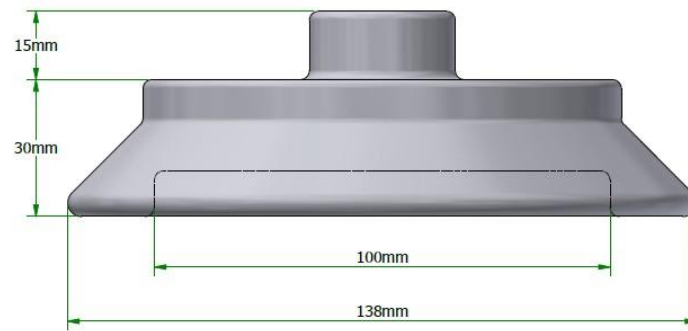
PC705.060.003



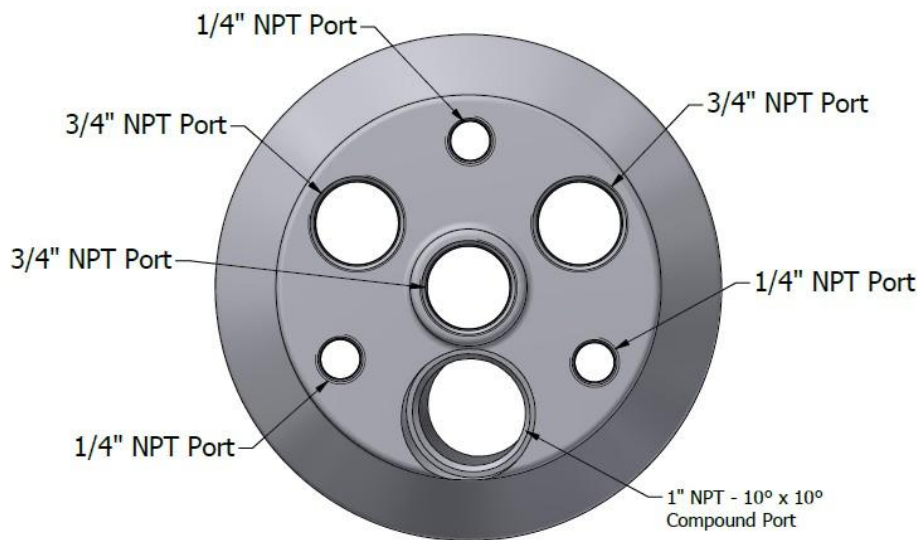
PC705.060.004



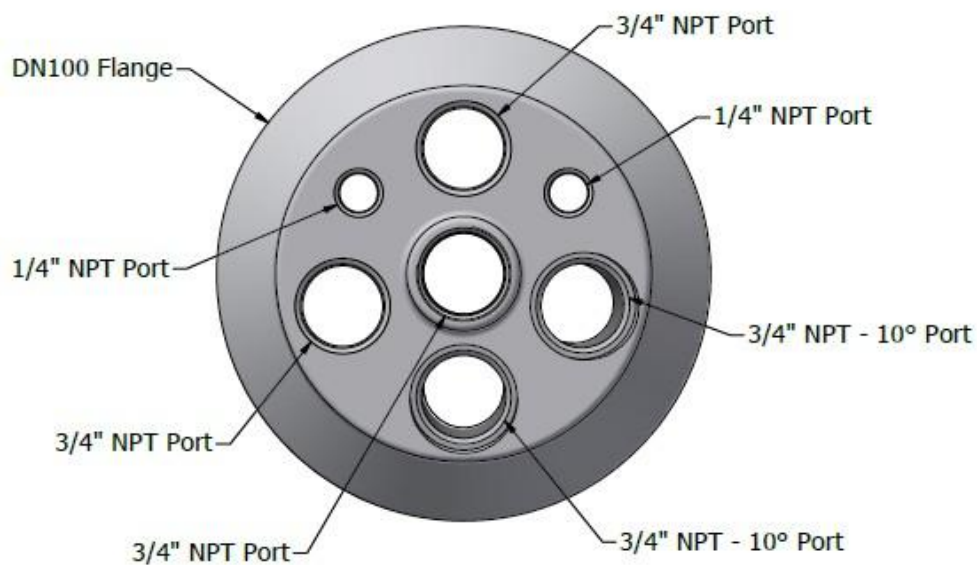
100mm Self Assembly Reactor Lids:



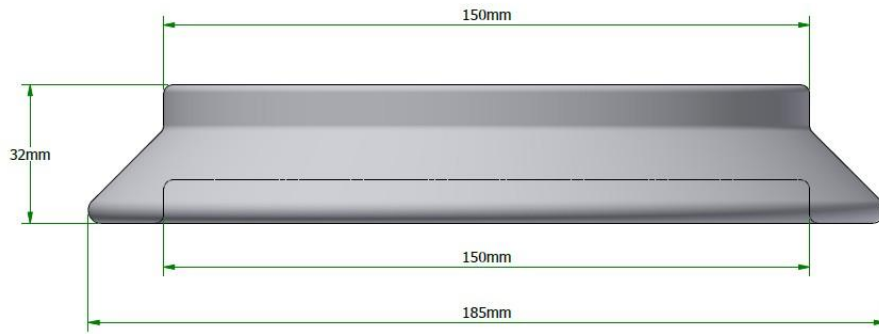
PC705.100.002



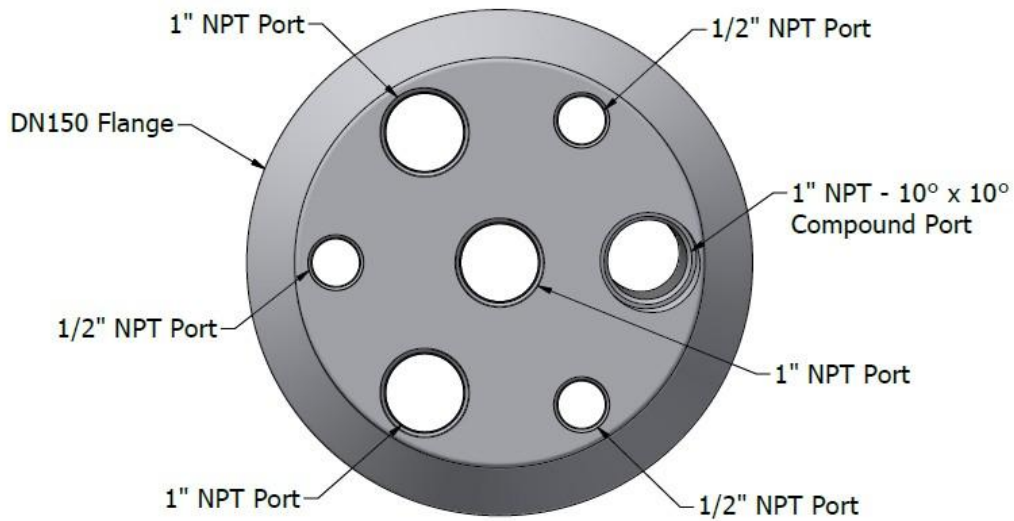
PC705.100.003



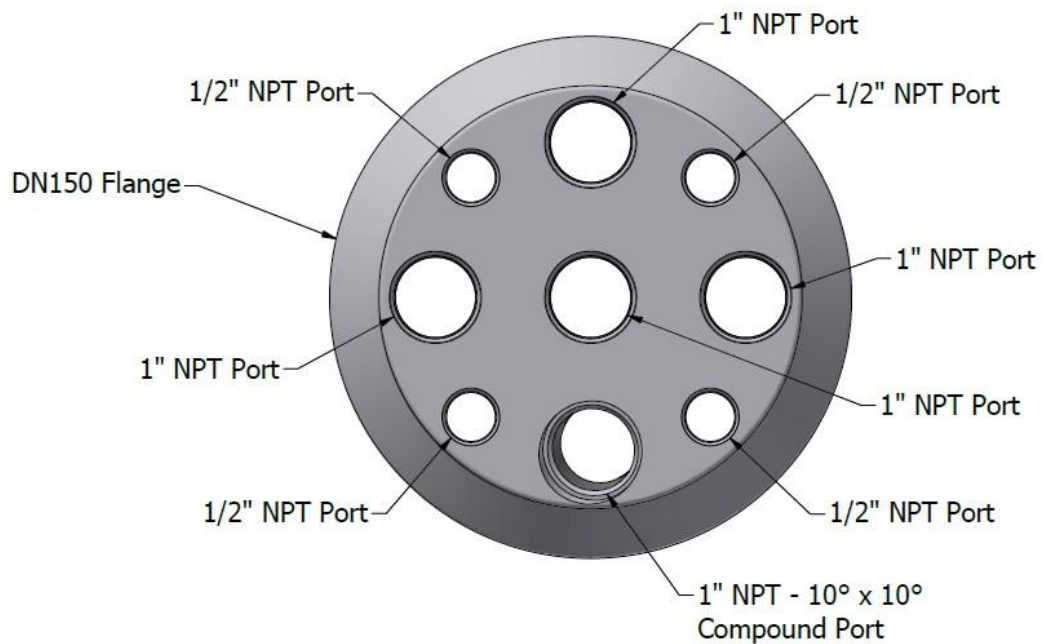
150mm Self Assembly Reactor Lids:



PC705.150.002



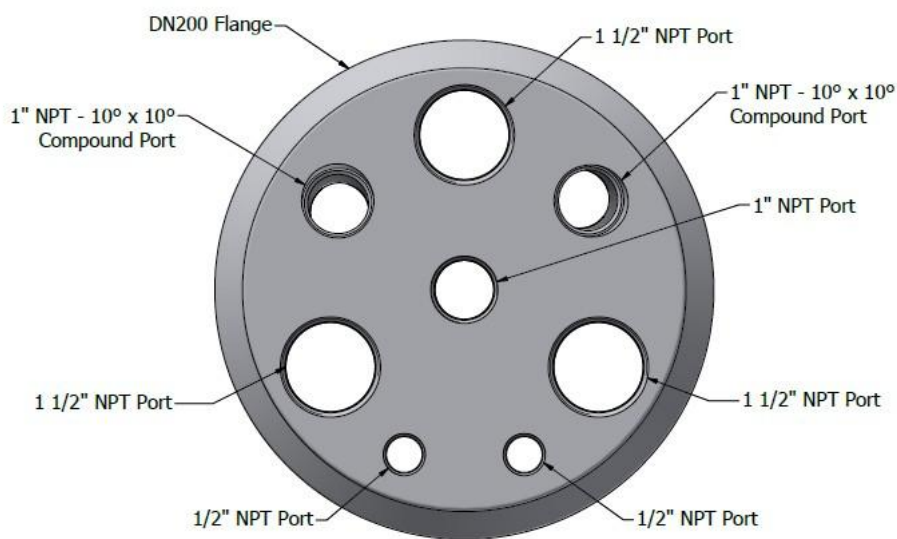
PC705.150.003



200mm Self Assembly Reactor Lids:



PC705.200.002



PC705.200.003

